



PROFESSIONAL MEDICAL APPAREL

www.indosurgicals.com

WELCOME

IndoSurgicals Private Limited is a leading Indian manufacturer with over 10 years of experience in the hospital dress sector. From our factory in Delhi, India we passionately handcraft products, which we supply internationally through a network of trusted partners. With a dedicated approach, we can boast some of the quickest delivery times in the market; giving you access to the quality products you need to keep you safe.

We, along with our best brain in the industry and technology take pride in developing products and innovating services to meet your growing needs. Looking after our customers is paramount and we believe that buying from us should be a pleasure. Our warm and friendly approach goes hand in hand with product quality and service efficiency.

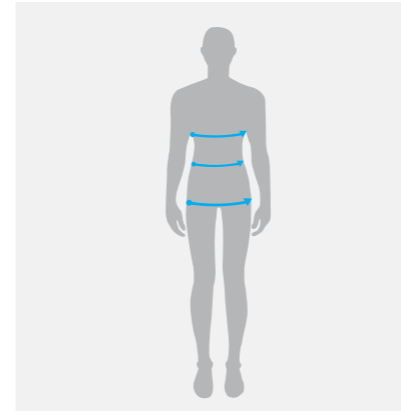
Our underpinning ethos will always be, protecting healthcare staff from the harmful effects of cumulative exposure to scatter radiation; whilst offering maximum comfort.

IndoSurgicals Private Limited is an ISO 9001 & ISO 13485 accredited company.

www.indosurgicals.com



CONTENTS



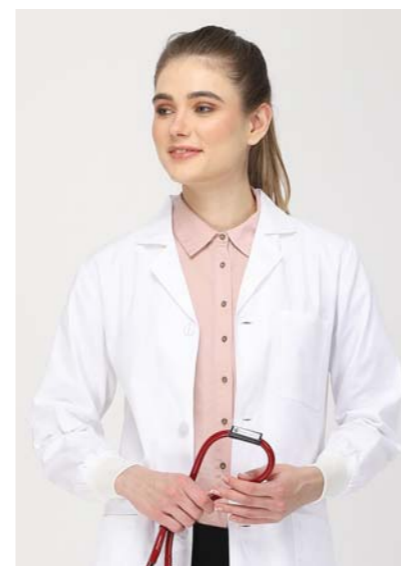
SHAPE

Lab Coat	05
Scrub Suit	06
Surgeon & Patient Gown	07
Measurement Guide	07



UNISEX LAB COAT

Button Closure	
Half Sleeve	08
Full Sleeve	09
Full Sleeve with knit cuffs	10
Snap Closure	
Half Sleeve	11
Full Sleeve	12
Full Sleeve with knit cuffs	13
Zipper Closure	
Half Sleeve	14
Full Sleeve	15
Full Sleeve with knit cuffs	16



FEMALE LAB COAT

Button Closure	
Half Sleeve	17
Full Sleeve	18
Full Sleeve with knit cuffs	19
Snap Closure	
Half Sleeve	20
Full Sleeve	21
Full Sleeve with knit cuffs	22
Zipper Closure	
Half Sleeve	23
Full Sleeve	24
Full Sleeve with knit cuffs	25

CONTENTS

SCRUB SUIT

Unisex Scrub Suit -----	26
Female Scrub Suit -----	27
Female Scrub Jacket -----	28



SURGEON & PATIENT GOWN

Surgeon Gown -----	29
Patient Gown -----	29



LAB COAT SHAPE

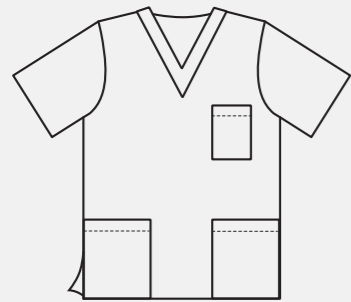
CLOSURE TYPE	Button	Snap	Zipper	
SLEEVE LENGTH & TYPE	Half Sleeve	Full Sleeve	Full Sleeve with Knit Cuffs	
OVERALL LENGTH OF MEDIUM SIZE	30"	34"	37"	41"
CLOSURE TYPE	Button	Snap	Zipper	
SLEEVE LENGTH & TYPE	Half Sleeve	Full Sleeve	Full Sleeve with Knit Cuffs	
OVERALL LENGTH OF MEDIUM SIZE	28"	32"	35"	37"

UNISEX

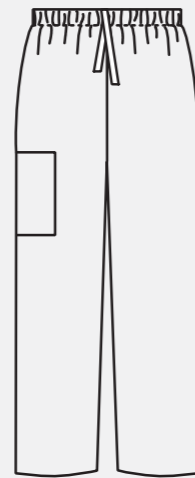
FEMALE

SCRUB SUIT SHAPE

V-NECK TOP WITH THREE POCKETS & SIDE SLITS



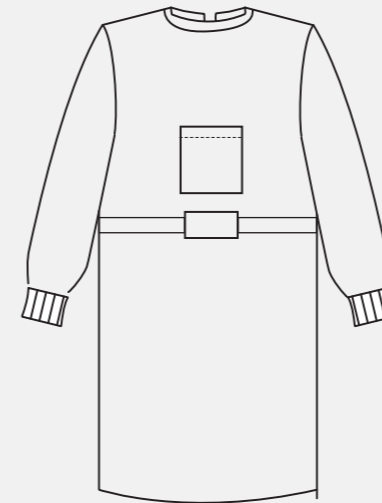
PANT WITH ELASTIC & DRAWSTRING WAISTBAND



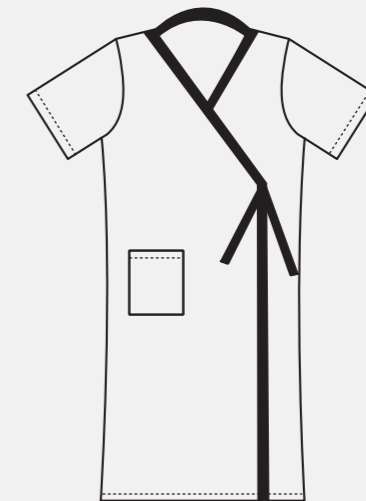
UNISEX

SURGEON & PATIENT GOWN SHAPE

SURGEON GOWN KNIT CUFFS, WAISTBAND & BACK TIE CLOSURE

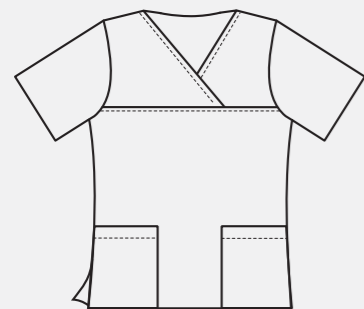


PATIENT GOWN FRONT POCKET & SIDE TIE CLOSURE

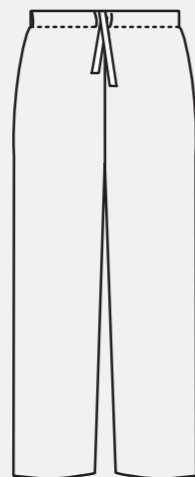


UNISEX

FAUX WRAP TOP WITH TWO POCKETS & SIDE SLITS

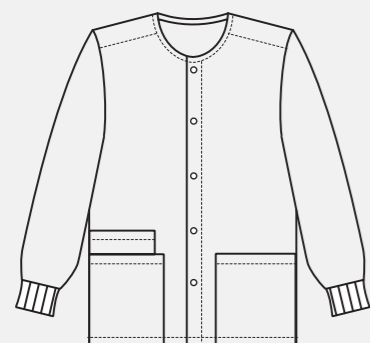


PANT WITH DRAWSTRING WAISTBAND

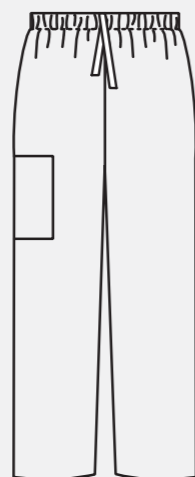


FEMALE

ROUND NECK TOP WITH TWO FRONT PATCH POCKETS & SIDE SLITS



PANT WITH ELASTIC & DRAWSTRING WAISTBAND



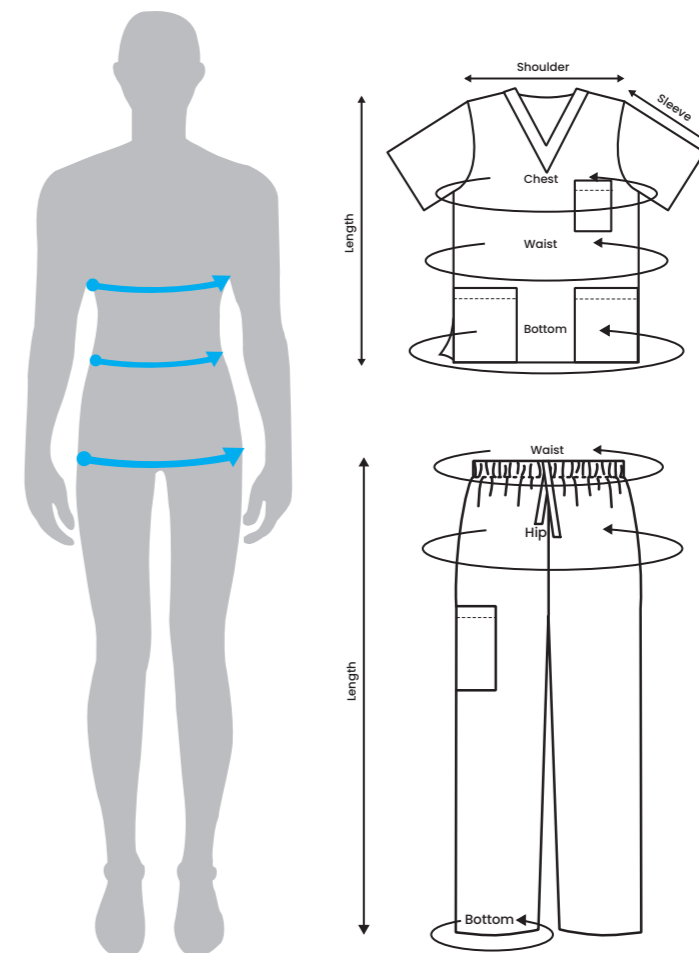
FEMALE

HOW TO MEASURE YOUR BODY

CHEST: Measure under arm at the fullest part of the chest and around the shoulder blades

WAIST: Measure around your body's natural waist

HIP: Measure around the fullest part of your hips



UNISEX LAB COAT

BUTTON CLOSURE HALF SLEEVE

Specifications:

- Length based on **Size Medium**
- Left chest pocket and two lower outside pockets
- This professional lab coat provides protection against spills and splashes! Suitable for Medical Professionals, Scientists, Biology
- Side slit for pant access (available only in 37" & 41" length)
- Available Size: XXS to XXXXL

Available Fabric:

- 80% Polyester/20% Cotton Poplin Wave – 170 GSM
- 65% Polyester/35% Cotton Twill Wave – 185 GSM
- 65% Polyester/35% Cotton Twill Wave – 235 GSM
- 100% Cotton Drill Wave – 200 GSM
- 100% Polyester Twill Wave – 185 GSM



Length
30"



Length
34"



Length
37"

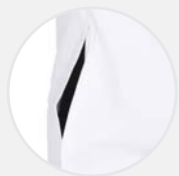


Length
41"

LABEL SIZE	32/XXS	34/XS	36/S	38/M	40/L	42/XL	44/XXL	46/XXXL	48/XXXXL
CHEST	36"	38"	40"	42"	44"	46"	48"	50"	53"
WAIST	38"	40"	42"	44"	46"	48"	50"	52"	55"
SHOULDER	16"	16½"	17"	17½"	18"	18½"	19"	19½"	20¼"
SLEEVE LENGTH	9"	9"	9"	9½"	9½"	10"	10"	11"	11"
LENGTH - 30"	28½"	29"	29½"	30"	30½"	31"	31½"	32"	32"
LENGTH - 34"	32½"	33"	33½"	34"	34½"	35"	35½"	36"	36"
LENGTH - 37"	35½"	36"	36½"	37"	37½"	38"	38½"	39"	39"
LENGTH - 41"	39½"	40"	40½"	41"	41½"	42"	42½"	43"	43"



BUTTON CLOSURE
FRONT



SIDE SLITS FOR
POCKET ACCESS

UNISEX LAB COAT

BUTTON CLOSURE FULL SLEEVE

Specifications:

- Length based on **Size Medium**
- Left chest pocket and two lower outside pockets
- This professional lab coat provides protection against spills and splashes! Suitable for Medical Professionals, Scientists, Biology
- Side slit for pant access (available only in 37" & 41" length)
- Available Size: XXS to XXXXL

Available Fabric:

- 80% Polyester/20% Cotton Poplin Wave – 170 GSM
- 65% Polyester/35% Cotton Twill Wave – 185 GSM
- 65% Polyester/35% Cotton Twill Wave – 235 GSM
- 100% Cotton Drill Wave – 200 GSM
- 100% Polyester Twill Wave – 185 GSM



Length
30"



Length
34"

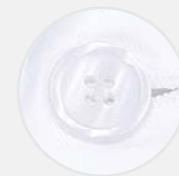


Length
37"

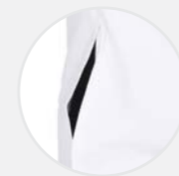


Length
41"

LABEL SIZE	32/XXS	34/XS	36/S	38/M	40/L	42/XL	44/XXL	46/XXXL	48/XXXXL
CHEST	36"	38"	40"	42"	44"	46"	48"	50"	53"
WAIST	38"	40"	42"	44"	46"	48"	50"	52"	55"
SHOULDER	16"	16½"	17"	17½"	18"	18½"	19"	19½"	20¼"
SLEEVE LENGTH	23"	23"	23½"	24"	24"	24½"	24½"	25"	25"
LENGTH - 30"	28½"	29"	29½"	30"	30½"	31"	31½"	32"	32"
LENGTH - 34"	32½"	33"	33½"	34"	34½"	35"	35½"	36"	36"
LENGTH - 37"	35½"	36"	36½"	37"	37½"	38"	38½"	39"	39"
LENGTH - 41"	39½"	40"	40½"	41"	41½"	42"	42½"	43"	43"



BUTTON CLOSURE
FRONT



SIDE SLITS FOR
POCKET ACCESS

UNISEX LAB COAT

BUTTON CLOSURE FULL SLEEVE WITH KNIT CUFFS

Specifications:

- Length based on **Size Medium**
- Left chest pocket and two lower outside pockets
- This professional lab coat provides protection against spills and splashes! Suitable for Medical Professionals, Scientists, Biology
- Side slit for pant access (available only in 37" & 41" length)
- Available Size: XXS to XXXXL

Available Fabric:

- 80% Polyester/20% Cotton Poplin Wave – 170 GSM
- 65% Polyester/35% Cotton Twill Wave – 185 GSM
- 65% Polyester/35% Cotton Twill Wave – 235 GSM
- 100% Cotton Drill Wave – 200 GSM
- 100% Polyester Twill Wave – 185 GSM

Length
30"



Length
34"



Length
37"

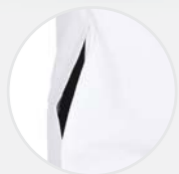


Length
41"

LABEL SIZE	32/XXS	34/XS	36/S	38/M	40/L	42/XL	44/XXL	46/XXXL	48/XXXXL
CHEST	36"	38"	40"	42"	44"	46"	48"	50"	53"
WAIST	38"	40"	42"	44"	46"	48"	50"	52"	55"
SHOULDER	16"	16½"	17"	17½"	18"	18½"	19"	19½"	20¼"
SLEEVE LENGTH	23"	23"	23½"	24"	24"	24½"	24½"	25"	25"
LENGTH - 30"	28½"	29"	29½"	30"	30½"	31"	31½"	32"	32"
LENGTH - 34"	32½"	33"	33½"	34"	34½"	35"	35½"	36"	36"
LENGTH - 37"	35½"	36"	36½"	37"	37½"	38"	38½"	39"	39"
LENGTH - 41"	39½"	40"	40½"	41"	41½"	42"	42½"	43"	43"



BUTTON CLOSURE FRONT



SIDE SLITS FOR POCKET ACCESS



KNIT CUFF

UNISEX LAB COAT

SNAP CLOSURE HALF SLEEVE

Specifications:

- Length based on **Size Medium**
- Left chest pocket and two lower outside pockets
- This professional lab coat provides protection against spills and splashes! Suitable for Medical Professionals, Scientists, Biology
- Side slit for pant access (available only in 37" & 41" length)
- Available Size: XXS to XXXXL

Available Fabric:

- 80% Polyester/20% Cotton Poplin Wave – 170 GSM
- 65% Polyester/35% Cotton Twill Wave – 185 GSM
- 65% Polyester/35% Cotton Twill Wave – 235 GSM
- 100% Cotton Drill Wave – 200 GSM
- 100% Polyester Twill Wave – 185 GSM

Length
30"



Length
34"

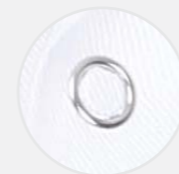


Length
37"

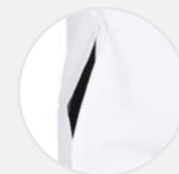


Length
41"

LABEL SIZE	32/XXS	34/XS	36/S	38/M	40/L	42/XL	44/XXL	46/XXXL	48/XXXXL
CHEST	36"	38"	40"	42"	44"	46"	48"	50"	53"
WAIST	38"	40"	42"	44"	46"	48"	50"	52"	55"
SHOULDER	16"	16½"	17"	17½"	18"	18½"	19"	19½"	20¼"
SLEEVE LENGTH	9"	9"	9"	9½"	9½"	10"	10"	11"	11"
LENGTH - 30"	28½"	29"	29½"	30"	30½"	31"	31½"	32"	32"
LENGTH - 34"	32½"	33"	33½"	34"	34½"	35"	35½"	36"	36"
LENGTH - 37"	35½"	36"	36½"	37"	37½"	38"	38½"	39"	39"
LENGTH - 41"	39½"	40"	40½"	41"	41½"	42"	42½"	43"	43"



SNAP CLOSURE FRONT



SIDE SLITS FOR POCKET ACCESS

UNISEX LAB COAT

SNAP CLOSURE FULL SLEEVE



Length
30"

Specifications:

- Length based on **Size Medium**
- Left chest pocket and two lower outside pockets
- This professional lab coat provides protection against spills and splashes! Suitable for Medical Professionals, Scientists, Biology
- Side slit for pant access (available only in 37" & 41" length)
- Available Size: XXS to XXXXL

Available Fabric:

- 80% Polyester/20% Cotton Poplin Wave – 170 GSM
- 65% Polyester/35% Cotton Twill Wave – 185 GSM
- 65% Polyester/35% Cotton Twill Wave – 235 GSM
- 100% Cotton Drill Wave – 200 GSM
- 100% Polyester Twill Wave – 185 GSM



Length
34"



Length
37"

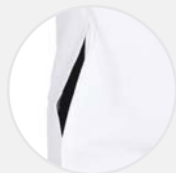


Length
41"

LABEL SIZE	32/XXS	34/XS	36/S	38/M	40/L	42/XL	44/XXL	46/XXXL	48/XXXXL
CHEST	36"	38"	40"	42"	44"	46"	48"	50"	53"
WAIST	38"	40"	42"	44"	46"	48"	50"	52"	55"
SHOULDER	16"	16½"	17"	17½"	18"	18½"	19"	19½"	20¼"
SLEEVE LENGTH	23"	23"	23½"	24"	24"	24½"	24½"	25"	25"
LENGTH - 30"	28½"	29"	29½"	30"	30½"	31"	31½"	32"	32"
LENGTH - 34"	32½"	33"	33½"	34"	34½"	35"	35½"	36"	36"
LENGTH - 37"	35½"	36"	36½"	37"	37½"	38"	38½"	39"	39"
LENGTH - 41"	39½"	40"	40½"	41"	41½"	42"	42½"	43"	43"



BUTTON CLOSURE
FRONT



SIDE SLITS FOR
POCKET ACCESS

UNISEX LAB COAT

SNAP CLOSURE FULL SLEEVE WITH KNIT CUFFS



Length
30"

Specifications:

- Length based on **Size Medium**
- Left chest pocket and two lower outside pockets
- This professional lab coat provides protection against spills and splashes! Suitable for Medical Professionals, Scientists, Biology
- Side slit for pant access (available only in 37" & 41" length)
- Available Size: XXS to XXXXL

Available Fabric:

- 80% Polyester/20% Cotton Poplin Wave – 170 GSM
- 65% Polyester/35% Cotton Twill Wave – 185 GSM
- 65% Polyester/35% Cotton Twill Wave – 235 GSM
- 100% Cotton Drill Wave – 200 GSM
- 100% Polyester Twill Wave – 185 GSM



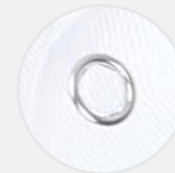
Length
34"



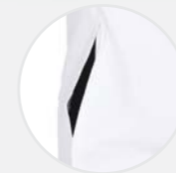
Length
37"



Length
41"



SNAP CLOSURE
FRONT



SIDE SLITS FOR
POCKET ACCESS



KNIT CUFF

LABEL SIZE	32/XXS	34/XS	36/S	38/M	40/L	42/XL	44/XXL	46/XXXL	48/XXXXL
CHEST	36"	38"	40"	42"	44"	46"	48"	50"	53"
WAIST	38"	40"	42"	44"	46"	48"	50"	52"	55"
SHOULDER	16"	16½"	17"	17½"	18"	18½"	19"	19½"	20¼"
SLEEVE LENGTH	23"	23"	23½"	24"	24"	24½"	24½"	25"	25"
LENGTH - 30"	28½"	29"	29½"	30"	30½"	31"	31½"	32"	32"
LENGTH - 34"	32½"	33"	33½"	34"	34½"	35"	35½"	36"	36"
LENGTH - 37"	35½"	36"	36½"	37"	37½"	38"	38½"	39"	39"
LENGTH - 41"	39½"	40"	40½"	41"	41½"	42"	42½"	43"	43"

UNISEX LAB COAT

ZIPPER CLOSURE HALF SLEEVE

Specifications:

- Length based on **Size Medium**
- Left chest pocket and two lower outside pockets
- This professional lab coat provides protection against spills and splashes! Suitable for Medical Professionals, Scientists, Biology
- Side slit for pant access (available only in 37" & 41" length)
- Available Size: XXS to XXXXL

Available Fabric:

- 80% Polyester/20% Cotton Poplin Wave – 170 GSM
- 65% Polyester/35% Cotton Twill Wave – 185 GSM
- 65% Polyester/35% Cotton Twill Wave – 235 GSM
- 100% Cotton Drill Wave – 200 GSM
- 100% Polyester Twill Wave – 185 GSM



Length
30"



Length
34"



Length
37"

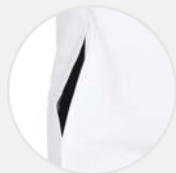


Length
41"

LABEL SIZE	32/XXS	34/XS	36/S	38/M	40/L	42/XL	44/XXL	46/XXXL	48/XXXXL
CHEST	36"	38"	40"	42"	44"	46"	48"	50"	53"
WAIST	38"	40"	42"	44"	46"	48"	50"	52"	55"
SHOULDER	16"	16½"	17"	17½"	18"	18½"	19"	19½"	20¼"
SLEEVE LENGTH	9"	9"	9"	9½"	9½"	10"	10"	11"	11"
LENGTH - 30"	28½"	29"	29½"	30"	30½"	31"	31½"	32"	32"
LENGTH - 34"	32½"	33"	33½"	34"	34½"	35"	35½"	36"	36"
LENGTH - 37"	35½"	36"	36½"	37"	37½"	38"	38½"	39"	39"
LENGTH - 41"	39½"	40"	40½"	41"	41½"	42"	42½"	43"	43"



ZIPPER CLOSURE FRONT



SIDE SLITS FOR POCKET ACCESS

UNISEX LAB COAT

ZIPPER CLOSURE FULL SLEEVE

Specifications:

- Length based on **Size Medium**
- Left chest pocket and two lower outside pockets
- This professional lab coat provides protection against spills and splashes! Suitable for Medical Professionals, Scientists, Biology
- Side slit for pant access (available only in 37" & 41" length)
- Available Size: XXS to XXXXL

Available Fabric:

- 80% Polyester/20% Cotton Poplin Wave – 170 GSM
- 65% Polyester/35% Cotton Twill Wave – 185 GSM
- 65% Polyester/35% Cotton Twill Wave – 235 GSM
- 100% Cotton Drill Wave – 200 GSM
- 100% Polyester Twill Wave – 185 GSM



Length
30"



Length
34"



Length
37"

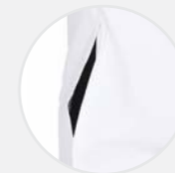


Length
41"

LABEL SIZE	32/XXS	34/XS	36/S	38/M	40/L	42/XL	44/XXL	46/XXXL	48/XXXXL
CHEST	36"	38"	40"	42"	44"	46"	48"	50"	53"
WAIST	38"	40"	42"	44"	46"	48"	50"	52"	55"
SHOULDER	16"	16½"	17"	17½"	18"	18½"	19"	19½"	20¼"
SLEEVE LENGTH	23"	23"	23½"	24"	24"	24½"	24½"	25"	25"
LENGTH - 30"	28½"	29"	29½"	30"	30½"	31"	31½"	32"	32"
LENGTH - 34"	32½"	33"	33½"	34"	34½"	35"	35½"	36"	36"
LENGTH - 37"	35½"	36"	36½"	37"	37½"	38"	38½"	39"	39"
LENGTH - 41"	39½"	40"	40½"	41"	41½"	42"	42½"	43"	43"



ZIPPER CLOSURE FRONT



SIDE SLITS FOR POCKET ACCESS

UNISEX LAB COAT

ZIPPER CLOSURE FULL SLEEVE WITH KNIT CUFFS

Specifications:

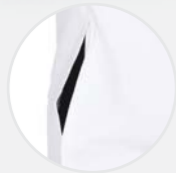
- Length based on **Size Medium**
- Left chest pocket and two lower outside pockets
- This professional lab coat provides protection against spills and splashes! Suitable for Medical Professionals, Scientists, Biology
- Side slit for pant access (available only in 37" & 41" length)
- Available Size: XXS to XXXXL

Available Fabric:

- 80% Polyester/20% Cotton Poplin Wave – 170 GSM
- 65% Polyester/35% Cotton Twill Wave – 185 GSM
- 65% Polyester/35% Cotton Twill Wave – 235 GSM
- 100% Cotton Drill Wave – 200 GSM
- 100% Polyester Twill Wave – 185 GSM



ZIPPER CLOSURE FRONT



SIDE SLITS FOR POCKET ACCESS



KNIT CUFF

LABEL SIZE	32/XXS	34/XS	36/S	38/M	40/L	42/XL	44/XXL	46/XXXL	48/XXXXL
CHEST	36"	38"	40"	42"	44"	46"	48"	50"	53"
WAIST	38"	40"	42"	44"	46"	48"	50"	52"	55"
SHOULDER	16"	16½"	17"	17½"	18"	18½"	19"	19½"	20¼"
SLEEVE LENGTH	23"	23"	23½"	24"	24"	24½"	24½"	25"	25"
LENGTH - 30"	28½"	29"	29½"	30"	30½"	31"	31½"	32"	32"
LENGTH - 34"	32½"	33"	33½"	34"	34½"	35"	35½"	36"	36"
LENGTH - 37"	35½"	36"	36½"	37"	37½"	38"	38½"	39"	39"
LENGTH - 41"	39½"	40"	40½"	41"	41½"	42"	42½"	43"	43"

FEMALE LAB COAT

BUTTON CLOSURE HALF SLEEVE

Specifications:

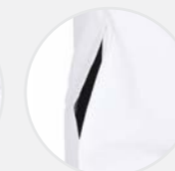
- Length based on **Size Medium**
- Left chest pocket and two lower outside pockets
- This professional lab coat provides protection against spills and splashes! Suitable for Medical Professionals, Scientists, Biology
- Side slit for pant access (available only in 37" & 41" length)
- Available Size: XXS to XXXXL

Available Fabric:

- 80% Polyester/20% Cotton Poplin Wave – 170 GSM
- 65% Polyester/35% Cotton Twill Wave – 185 GSM
- 65% Polyester/35% Cotton Twill Wave – 235 GSM
- 100% Cotton Drill Wave – 200 GSM
- 100% Polyester Twill Wave – 185 GSM



ZIPPER CLOSURE FRONT



SIDE SLITS FOR POCKET ACCESS

LABEL SIZE	32/XXS	34/XS	36/S	38/M	40/L	42/XL	44/XXL	46/XXXL	48/XXXXL
CHEST	34"	36"	38"	40"	42"	44"	46"	48"	50"
WAIST	32"	34"	36"	38"	40"	42"	44"	46"	48"
SHOULDER	15½"	16"	16½"	17"	17½"	18"	18½"	19"	19½"
SLEEVE LENGTH	8½"	8½"	9"	9"	9"	9½"	9½"	10½"	10½"
LENGTH - 28"	26½"	27"	27½"	28"	28½"	29"	29½"	30"	30"
LENGTH - 32"	30½"	31"	31½"	32"	32½"	33"	33½"	34"	34"
LENGTH - 35"	33½"	34"	34½"	35"	35½"	36"	36½"	37"	37"
LENGTH - 37"	35½"	36"	36½"	37"	37½"	38"	38½"	39"	39"

FEMALE LAB COAT

BUTTON CLOSURE FULL SLEEVE



Specifications:

- Length based on **Size Medium**
- Left chest pocket and two lower outside pockets
- This professional lab coat provides protection against spills and splashes! Suitable for Medical Professionals, Scientists, Biology
- Side slit for pant access (available only in 37" & 41" length)
- Available Size: XXS to XXXXL

Available Fabric:

- 80% Polyester/20% Cotton Poplin Wave – 170 GSM
- 65% Polyester/35% Cotton Twill Wave – 185 GSM
- 65% Polyester/35% Cotton Twill Wave – 235 GSM
- 100% Cotton Drill Wave – 200 GSM
- 100% Polyester Twill Wave – 185 GSM

Length
28"



Length
32"



Length
35"

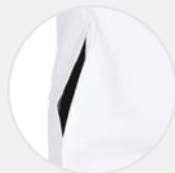


Length
37"

LABEL SIZE	32/XXS	34/XS	36/S	38/M	40/L	42/XL	44/XXL	46/XXXL	48/XXXXL
CHEST	34"	36"	38"	40"	42"	44"	46"	48"	50"
WAIST	32"	34"	36"	38"	40"	42"	44"	46"	48"
SHOULDER	15½"	16"	16½"	17"	17½"	18"	18½"	19"	19½"
SLEEVE LENGTH	22½"	22½"	23"	23"	23½"	23½"	24"	24"	24½"
LENGTH - 28"	26½"	27"	27½"	28"	28½"	29"	29½"	30"	30"
LENGTH - 32"	30½"	31"	31½"	32"	32½"	33"	33½"	34"	34"
LENGTH - 35"	33½"	34"	34½"	35"	35½"	36"	36½"	37"	37"
LENGTH - 37"	35½"	36"	36½"	37"	37½"	38"	38½"	39"	39"



ZIPPER CLOSURE FRONT



SIDE SLITS FOR POCKET ACCESS

FEMALE LAB COAT

BUTTON CLOSURE FULL SLEEVE WITH KNIT CUFFS



Specifications:

- Length based on **Size Medium**
- Left chest pocket and two lower outside pockets
- This professional lab coat provides protection against spills and splashes! Suitable for Medical Professionals, Scientists, Biology
- Side slit for pant access (available only in 37" & 41" length)
- Available Size: XXS to XXXXL

Available Fabric:

- 80% Polyester/20% Cotton Poplin Wave – 170 GSM
- 65% Polyester/35% Cotton Twill Wave – 185 GSM
- 65% Polyester/35% Cotton Twill Wave – 235 GSM
- 100% Cotton Drill Wave – 200 GSM
- 100% Polyester Twill Wave – 185 GSM

Length
28"



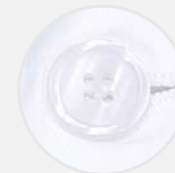
Length
32"



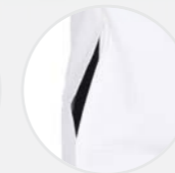
Length
35"



Length
37"



ZIPPER CLOSURE FRONT



SIDE SLITS FOR POCKET ACCESS



KNIT CUFF

LABEL SIZE	32/XXS	34/XS	36/S	38/M	40/L	42/XL	44/XXL	46/XXXL	48/XXXXL
CHEST	34"	36"	38"	40"	42"	44"	46"	48"	50"
WAIST	32"	34"	36"	38"	40"	42"	44"	46"	48"
SHOULDER	15½"	16"	16½"	17"	17½"	18"	18½"	19"	19½"
SLEEVE LENGTH	22½"	22½"	23"	23"	23½"	23½"	24"	24"	24½"
LENGTH - 28"	26½"	27"	27½"	28"	28½"	29"	29½"	30"	30"
LENGTH - 32"	30½"	31"	31½"	32"	32½"	33"	33½"	34"	34"
LENGTH - 35"	33½"	34"	34½"	35"	35½"	36"	36½"	37"	37"
LENGTH - 37"	35½"	36"	36½"	37"	37½"	38"	38½"	39"	39"

FEMALE LAB COAT

SNAP CLOSURE HALF SLEEVE



Length
28"

Specifications:

- Length based on **Size Medium**
- Left chest pocket and two lower outside pockets
- This professional lab coat provides protection against spills and splashes! Suitable for Medical Professionals, Scientists, Biology
- Side slit for pant access (available only in 37" & 41" length)
- Available Size: XXS to XXXXL

Available Fabric:

- 80% Polyester/20% Cotton Poplin Wave – 170 GSM
- 65% Polyester/35% Cotton Twill Wave – 185 GSM
- 65% Polyester/35% Cotton Twill Wave – 235 GSM
- 100% Cotton Drill Wave – 200 GSM
- 100% Polyester Twill Wave – 185 GSM



Length
32"

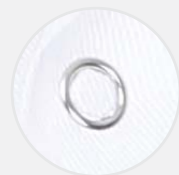


Length
35"

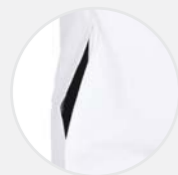


Length
37"

LABEL SIZE	32/XXS	34/XS	36/S	38/M	40/L	42/XL	44/XXL	46/XXXL	48/XXXXL
CHEST	34"	36"	38"	40"	42"	44"	46"	48"	50"
WAIST	32"	34"	36"	38"	40"	42"	44"	46"	48"
SHOULDER	15½"	16"	16½"	17"	17½"	18"	18½"	19"	19½"
SLEEVE LENGTH	8½"	8½"	9"	9"	9"	9½"	9½"	10½"	10½"
LENGTH - 28"	26½"	27"	27½"	28"	28½"	29"	29½"	30"	30"
LENGTH - 32"	30½"	31"	31½"	32"	32½"	33"	33½"	34"	34"
LENGTH - 35"	33½"	34"	34½"	35"	35½"	36"	36½"	37"	37"
LENGTH - 37"	35½"	36"	36½"	37"	37½"	38"	38½"	39"	39"



SNAP CLOSURE FRONT



SIDE SLITS FOR POCKET ACCESS

FEMALE LAB COAT

SNAP CLOSURE FULL SLEEVE



Length
28"

Specifications:

- Length based on **Size Medium**
- Left chest pocket and two lower outside pockets
- This professional lab coat provides protection against spills and splashes! Suitable for Medical Professionals, Scientists, Biology
- Side slit for pant access (available only in 37" & 41" length)
- Available Size: XXS to XXXXL

Available Fabric:

- 80% Polyester/20% Cotton Poplin Wave – 170 GSM
- 65% Polyester/35% Cotton Twill Wave – 185 GSM
- 65% Polyester/35% Cotton Twill Wave – 235 GSM
- 100% Cotton Drill Wave – 200 GSM
- 100% Polyester Twill Wave – 185 GSM



Length
32"

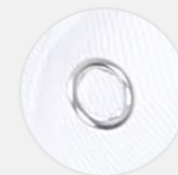


Length
35"

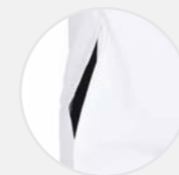


Length
37"

LABEL SIZE	32/XXS	34/XS	36/S	38/M	40/L	42/XL	44/XXL	46/XXXL	48/XXXXL
CHEST	34"	36"	38"	40"	42"	44"	46"	48"	50"
WAIST	32"	34"	36"	38"	40"	42"	44"	46"	48"
SHOULDER	15½"	16"	16½"	17"	17½"	18"	18½"	19"	19½"
SLEEVE LENGTH	22½"	22½"	23"	23"	23½"	23½"	24"	24"	24½"
LENGTH - 28"	26½"	27"	27½"	28"	28½"	29"	29½"	30"	30"
LENGTH - 32"	30½"	31"	31½"	32"	32½"	33"	33½"	34"	34"
LENGTH - 35"	33½"	34"	34½"	35"	35½"	36"	36½"	37"	37"
LENGTH - 37"	35½"	36"	36½"	37"	37½"	38"	38½"	39"	39"



SNAP CLOSURE FRONT



SIDE SLITS FOR POCKET ACCESS

FEMALE LAB COAT

SNAP CLOSURE FULL SLEEVE WITH KNIT CUFFS

Specifications:

- Length based on **Size Medium**
- Left chest pocket and two lower outside pockets
- This professional lab coat provides protection against spills and splashes! Suitable for Medical Professionals, Scientists, Biology
- Side slit for pant access (available only in 37" & 41" length)
- Available Size: XXS to XXXXL

Available Fabric:

- 80% Polyester/20% Cotton Poplin Wave – 170 GSM
- 65% Polyester/35% Cotton Twill Wave – 185 GSM
- 65% Polyester/35% Cotton Twill Wave – 235 GSM
- 100% Cotton Drill Wave – 200 GSM
- 100% Polyester Twill Wave – 185 GSM



Length
28"



Length
32"



Length
35"



Length
37"



SNAP CLOSURE FRONT

SIDE SLITS FOR POCKET ACCESS

KNIT CUFF

LABEL SIZE	32/XXS	34/XS	36/S	38/M	40/L	42/XL	44/XXL	46/XXXL	48/XXXXL
CHEST	34"	36"	38"	40"	42"	44"	46"	48"	50"
WAIST	32"	34"	36"	38"	40"	42"	44"	46"	48"
SHOULDER	15½"	16"	16½"	17"	17½"	18"	18½"	19"	19½"
SLEEVE LENGTH	22½"	22½"	23"	23"	23½"	23½"	24"	24"	24½"
LENGTH - 28"	26½"	27"	27½"	28"	28½"	29"	29½"	30"	30"
LENGTH - 32"	30½"	31"	31½"	32"	32½"	33"	33½"	34"	34"
LENGTH - 35"	33½"	34"	34½"	35"	35½"	36"	36½"	37"	37"
LENGTH - 37"	35½"	36"	36½"	37"	37½"	38"	38½"	39"	39"

FEMALE LAB COAT

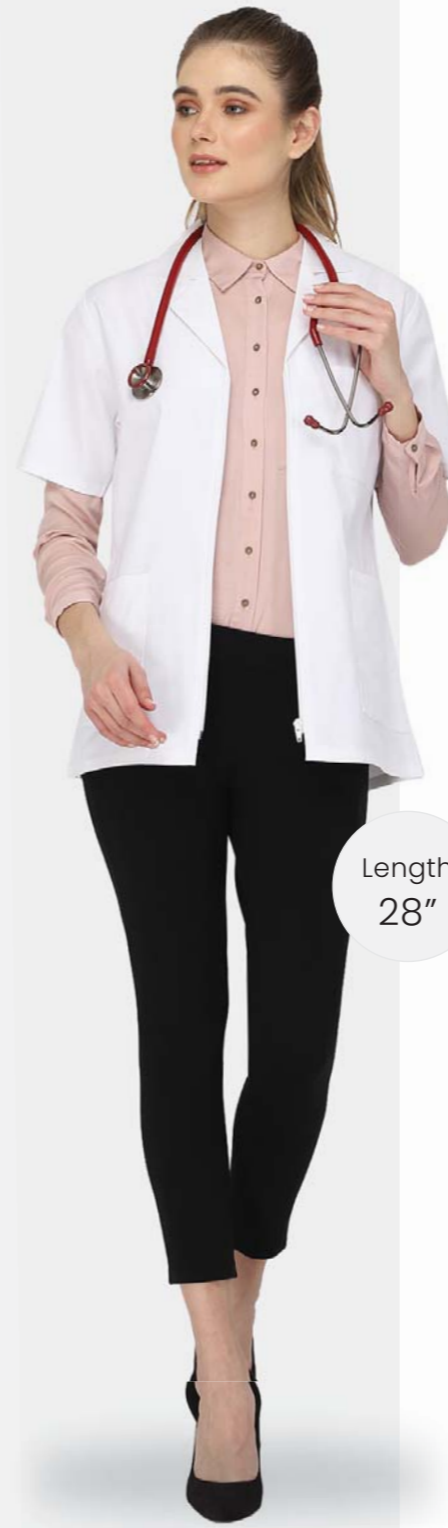
ZIPPER CLOSURE HALF SLEEVE

Specifications:

- Length based on **Size Medium**
- Left chest pocket and two lower outside pockets
- This professional lab coat provides protection against spills and splashes! Suitable for Medical Professionals, Scientists, Biology
- Side slit for pant access (available only in 37" & 41" length)
- Available Size: XXS to XXXXL

Available Fabric:

- 80% Polyester/20% Cotton Poplin Wave – 170 GSM
- 65% Polyester/35% Cotton Twill Wave – 185 GSM
- 65% Polyester/35% Cotton Twill Wave – 235 GSM
- 100% Cotton Drill Wave – 200 GSM
- 100% Polyester Twill Wave – 185 GSM



Length
28"



Length
32"



Length
35"



Length
37"



SNAP CLOSURE FRONT

SIDE SLITS FOR POCKET ACCESS

LABEL SIZE	32/XXS	34/XS	36/S	38/M	40/L	42/XL	44/XXL	46/XXXL	48/XXXXL
CHEST	34"	36"	38"	40"	42"	44"	46"	48"	50"
WAIST	32"	34"	36"	38"	40"	42"	44"	46"	48"
SHOULDER	15½"	16"	16½"	17"	17½"	18"	18½"	19"	19½"
SLEEVE LENGTH	8½"	8½"	9"	9"	9"	9½"	9½"	10½"	10½"
LENGTH - 28"	26½"	27"	27½"	28"	28½"	29"	29½"	30"	30"
LENGTH - 32"	30½"	31"	31½"	32"	32½"	33"	33½"	34"	34"
LENGTH - 35"	33½"	34"	34½"	35"	35½"	36"	36½"	37"	37"
LENGTH - 37"	35½"	36"	36½"	37"	37½"	38"	38½"	39"	39"

FEMALE LAB COAT

ZIPPER CLOSURE FULL SLEEVE



Length
28"



Length
32"



Length
35"



Length
37"

Specifications:

- Length based on **Size Medium**
- Left chest pocket and two lower outside pockets
- This professional lab coat provides protection against spills and splashes! Suitable for Medical Professionals, Scientists, Biology
- Side slit for pant access (available only in 37" & 41" length)
- Available Size: XXS to XXXXL

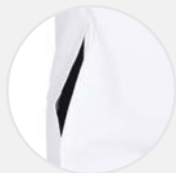
Available Fabric:

- 80% Polyester/20% Cotton Poplin Wave – 170 GSM
- 65% Polyester/35% Cotton Twill Wave – 185 GSM
- 65% Polyester/35% Cotton Twill Wave – 235 GSM
- 100% Cotton Drill Wave – 200 GSM
- 100% Polyester Twill Wave – 185 GSM

LABEL SIZE	32/XXS	34/XS	36/S	38/M	40/L	42/XL	44/XXL	46/XXXL	48/XXXXL
CHEST	34"	36"	38"	40"	42"	44"	46"	48"	50"
WAIST	32"	34"	36"	38"	40"	42"	44"	46"	48"
SHOULDER	15½"	16"	16½"	17"	17½"	18"	18½"	19"	19½"
SLEEVE LENGTH	22½"	22½"	23"	23"	23½"	23½"	24"	24"	24½"
LENGTH - 28"	26½"	27"	27½"	28"	28½"	29"	29½"	30"	30"
LENGTH - 32"	30½"	31"	31½"	32"	32½"	33"	33½"	34"	34"
LENGTH - 35"	33½"	34"	34½"	35"	35½"	36"	36½"	37"	37"
LENGTH - 37"	35½"	36"	36½"	37"	37½"	38"	38½"	39"	39"



ZIPPER CLOSURE FRONT



SIDE SLITS FOR POCKET ACCESS

FEMALE LAB COAT

ZIPPER CLOSURE FULL SLEEVE WITH KNIT CUFFS



Length
28"



Length
32"



Length
35"



Length
37"

Specifications:

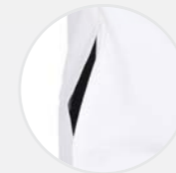
- Length based on **Size Medium**
- Left chest pocket and two lower outside pockets
- This professional lab coat provides protection against spills and splashes! Suitable for Medical Professionals, Scientists, Biology
- Side slit for pant access (available only in 37" & 41" length)
- Available Size: XXS to XXXXL

Available Fabric:

- 80% Polyester/20% Cotton Poplin Wave – 170 GSM
- 65% Polyester/35% Cotton Twill Wave – 185 GSM
- 65% Polyester/35% Cotton Twill Wave – 235 GSM
- 100% Cotton Drill Wave – 200 GSM
- 100% Polyester Twill Wave – 185 GSM



ZIPPER CLOSURE FRONT



SIDE SLITS FOR POCKET ACCESS



KNIT CUFF

LABEL SIZE	32/XXS	34/XS	36/S	38/M	40/L	42/XL	44/XXL	46/XXXL	48/XXXXL
CHEST	34"	36"	38"	40"	42"	44"	46"	48"	50"
WAIST	32"	34"	36"	38"	40"	42"	44"	46"	48"
SHOULDER	15½"	16"	16½"	17"	17½"	18"	18½"	19"	19½"
SLEEVE LENGTH	22½"	22½"	23"	23"	23½"	23½"	24"	24"	24½"
LENGTH - 28"	26½"	27"	27½"	28"	28½"	29"	29½"	30"	30"
LENGTH - 32"	30½"	31"	31½"	32"	32½"	33"	33½"	34"	34"
LENGTH - 35"	33½"	34"	34½"	35"	35½"	36"	36½"	37"	37"
LENGTH - 37"	35½"	36"	36½"	37"	37½"	38"	38½"	39"	39"



UNISEX SCRUB SUIT

V-NECK

- Classic relaxed fit, generously cut to provide optimal comfort and ease of movement whether tucked in or left loose
- This V-neck scrub top features 3 pockets including one chest Pocket (W3.75" X L5") and two lower roomy pockets (W6.75" X L8")
- Our plain wave fabric is soft to the touch and durable enough to withstand commercial laundering
- Crafted to be worn for long shifts throughout the work week and to withstand repeated washings
- Slightly Tapered Scrub pants features elastic waist-band with drawstring, two slash pockets, one cargo pocket and four-way stretch fabric to provide you superior fit, comfort and function throughout your day

Available Fabric:

- 65% Polyester/35% Cotton Plain Wave – 180 GSM
- 50% Polyester/50% Cotton Plain Wave – 90 GSM
- 65% Polyester/35% viscose Plain Wave – 90 GSM

BELOW MEASUREMENTS ARE IN INCHES

The size of our dress is based on the chest size. That means if your chest is 40", the size 40(L) will best fit for you. However the actual size of chest in clothes is 44". During size selection for extra long, extra short, extra obese body please consider right, waist and hip tool.

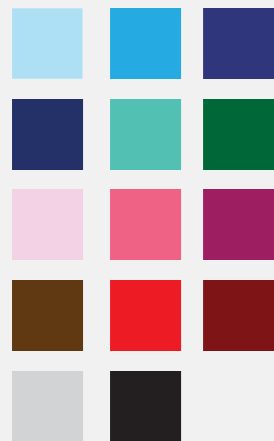
The size given below are the size of the garment (TOP)

LABEL SIZE	32/XXS	34/XS	36/S	38/M	40/L	42/XL	44/XXL	46/XXXL	48/XXXXL
CHEST	36"	38"	40"	42"	44"	46"	48"	50"	53"
SHOULDER	15½"	16"	16½"	17"	17½"	18"	18½"	19"	19½"
WAIST	34"	36"	38"	40"	42"	44"	46"	48"	51"
TOP LENGTH	27½"	27½"	28"	28½"	29"	29½"	30"	30½"	31"
SLEEVE LENGTH	8½"	8½"	9"	9"	9"	9½"	9½"	9½"	9½"
BOTTOM	39"	41"	43"	45"	47"	49"	51"	53"	56"

The size given below are the size of the garment (Bottom)

LABEL SIZE	32/XXS	34/XS	36/S	38/M	40/L	42/XL	44/XXL	46/XXXL	48/XXXXL
WAIST STRETCHED	38"	40"	42"	44"	46"	48"	50"	52"	55"
WAIST UN-STRETCHED	20"	22"	24"	26"	28"	30"	32"	34"	37"
LENGTH	39½"	39½"	39½"	40"	40½"	40½"	40½"	41"	41½"
HIP	38"	40"	42"	44"	46"	48"	50"	52"	55"
BOTTOM	13"	14"	15"	16"	17"	18"	19"	20"	21½"

Available Colors:



FEMALE SCRUB SUIT

FAUX WRAP

- Classic relaxed fit, generously cut to provide optimal comfort and ease of movement whether tucked in or left loose
- This Faux Wrap Neck (Overlapping) scrub top features two lower roomy pockets (W6.75" X L7.5")
- Our plain wave fabric is soft to the touch and durable enough to withstand commercial laundering
- Crafted to be worn for long shifts throughout the work week and to withstand repeated washings
- Slightly Tapered Scrub pants features drawstring waist-band with two slash pockets, four-way stretch fabric to provide you superior fit, comfort and function throughout your day

Available Fabric:

- 65% Polyester/35% Cotton Plain Wave – 180 GSM
- 50% Polyester/50% Cotton Plain Wave – 90 GSM
- 65% Polyester/35% viscose Plain Wave – 90 GSM

BELOW MEASUREMENTS ARE IN INCHES

The size of our dress is based on the chest size. That means if your chest is 40", the size 40(L) will best fit for you. However the actual size of chest in clothes is 44". During size selection for extra long, extra short, extra obese body please consider right, waist and hip tool.

The size given below are the size of the garment (TOP)

LABEL SIZE	32/XXS	34/XS	36/S	38/M	40/L	42/XL	44/XXL	46/XXXL	48/XXXXL
BUST	34"	36"	38"	40"	42"	44"	46"	48"	51"
SHOULDER	14½"	15"	15½"	16"	16½"	17"	17½"	18"	18½"
WAIST	32"	34"	36"	38"	40"	42"	44"	46"	49"
TOP LENGTH	27"	27"	27½"	28"	28½"	29"	29½"	30"	30½"
SLEEVE LENGTH	7½"	7½"	7½"	8"	8½"	8½"	8½"	9"	9½"
BOTTOM	40"	42"	44"	46"	48"	50"	52"	54"	57"

The size given below are the size of the garment (Bottom)

LABEL SIZE	32/XXS	34/XS	36/S	38/M	40/L	42/XL	44/XXL	46/XXXL	48/XXXXL
WAIST	36"	38"	40"	42"	44"	46"	48"	50"	53"
LENGTH	37½"	37½"	37½"	38"	38½"	38½"	38½"	39"	39½"
HIP	38"	40"	42"	44"	46"	48"	50"	52"	55"
BOTTOM	12"	13"	14"	15"	16"	17"	18"	19"	20½"

Available Colors:





FEMALE SCRUB JECKET

SNAP CLOSURE FULL SLEEVE WITH KNIT CUFFS

- Five snaps and you're set for a day of cozy in IndoSurgicals scrub jacket. Knit cuff sleeves keep away the chill. Streamlined pockets hold just what you need. Our classic designs in the IndoSurgicals Workwear Originals scrub collection are built for durability, designed for comfort, and offer easy care.
- Round Neck top with Traditional classic fit, Snap-front closure, Knit cuffs, Total of 3 pockets (2 front patch pockets & 1 right cell phone pocket)
- Our plain wave fabric is soft to the touch and durable enough to withstand commercial laundering
- Slightly Tapered Scrub pants features elastic waistband with drawstring, two slash pockets, one cargo pocket and four-way stretch fabric to provide you superior fit, comfort and function throughout your day

Available Fabric:

- 65% Polyester/35% Cotton Plain Wave – 180 GSM
- 50% Polyester/50% Cotton Plain Wave – 90 GSM
- 65% Polyester/35% viscose Plain Wave – 90 GSM

BELOW MEASUREMENTS ARE IN INCHES

The size of our dress is based on the chest size. That means if your chest is 40", the size 40(L) will best fit for you. However the actual size of chest in clothes is 44". During size selection for extra long, extra short, extra obese body please consider right, waist and hip tool.

The size given below are the size of the garment (TOP)

LABEL SIZE	32/XXS	34/XS	36/S	38/M	40/L	42/XL	44/XXL	46/XXXL	48/XXXXL
BUST	34"	36"	38"	40"	42"	44"	46"	48"	51"
SHOULDER	15"	15½"	16"	16½"	17"	17½"	18"	18½"	19"
WAIST	32"	34"	36"	38"	40"	42"	44"	46"	49"
TOP LENGTH	27½"	27½"	28"	28½"	29"	29½"	30"	30½"	31"
SLEEVE LENGTH	23"	23"	23"	23½"	23½"	23½"	24"	24"	24"
BOTTOM	38"	40"	42"	44"	46"	48"	50"	52"	55"

The size given below are the size of the garment (Bottom)

LABEL SIZE	32/XXS	34/XS	36/S	38/M	40/L	42/XL	44/XXL	46/XXXL	48/XXXXL
Waist Stretched	34"	36"	38"	40"	42"	44"	46"	48"	51"
Waist Un-Stretched	20"	22"	24"	26"	28"	30"	32"	34"	37"
LENGTH	37½"	38"	38½"	38½"	38½"	39"	39½"	39½"	40"
HIP	34½"	36½"	38½"	40½"	42½"	44½"	46½"	48½"	51½"
BOTTOM	12"	13"	14"	15"	16"	17"	18"	19"	20½"

Available Colors:



UNISEX SURGEON GOWN

TIE CLOSURE FULL SLEEVE WITH KNIT CUFFS

- Classic relaxed fit, generously cut to provide optimal comfort and ease of movement whether tucked in or left loose
- Round Neck gown with Traditional classic fit, back tie closure, Knit cuffs, Front roomy patch pocket & waistband.
- Casment fabric is soft to the touch and durable enough to withstand commercial laundering
- Crafted to be worn for long surgeries and to withstand repeated washings
- Supplied with face mask & surgeon's cap

Available Fabric:

- 100% Casment Cotton – 200 GSM

Available Colors:



BELOW MEASUREMENTS ARE IN INCHES

LABEL SIZE	S	M	L	XL
Chest	46"	50"	54"	58"
SHOULDER	20½"	21½"	22"	23½"
LENGTH	46"	46"	46½"	47"
SLEEVE LENGTH	24"	25"	25½"	25½"



UNISEX PATIENT GOWN

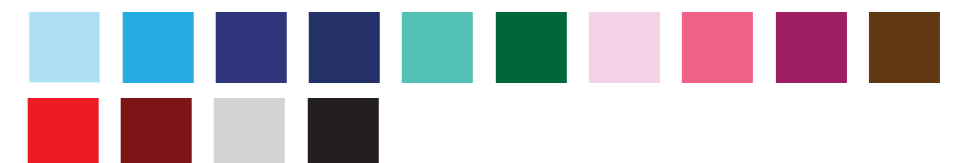
SIDE TIE CLOSURE WITH BIG AIRY SLEEVES

- This hospital patient gown is suitable for both men and women and has been designed to fit all sizes up to 2XL. Measuring overall Length 45", Chest 50" and Bottom 50" with sizeable big airy sleeves.
- The side ties of patient gown helps in keeping the privacy of its wearer and at the same time very easy to wear and change.
- These hospital patient gowns are made using High Quality Poly Cotton Blended Fabric which is softer, lightweight, gentler and comfortable to put on as when compared with disposable type of hospital gowns.

Available Fabric:

- 65% Polyester/35% Cotton Plain Wave – 180 GSM
- 50% Polyester/50% Cotton Plain Wave – 90 GSM
- 65% Polyester/35% viscose Plain Wave – 90 GSM

Available Colors:



INDOSURGICALS PRIVATE LIMITED

Factory cum Office: C-116 & 117, Mayapuri Industrial Area Phase II, New Delhi - 110064, India

Consumer Care Cell: +91 93500 93400 | Exports: +91 11 4909 2567

Email: info@indosurgicals.com | Website: www.indosurgicals.com